

# Franklyn James



## Pigott Street

, London, E14 7DW

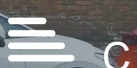
Asking Price £425,000

This spacious three-bedroom maisonette, currently operating as a well-established HMO, offers both an excellent investment opportunity along with the potential to be a wonderful family home. Ideally located within walking distance of Canary Wharf and Westferry DLR, the property features three generously sized double bedrooms, providing ample space for family living. The bright reception area opens onto a charming patio garden with rear access, perfect for outdoor activities and relaxation. Inside, you'll find a fitted kitchen, separate living room, cloakroom, gas central heating, and plenty of storage—making this property a comfortable and practical choice for modern family life.

- 3 bedrooms
- Split level maisonette
- Chain free
- HMO licence
- Private rear garden

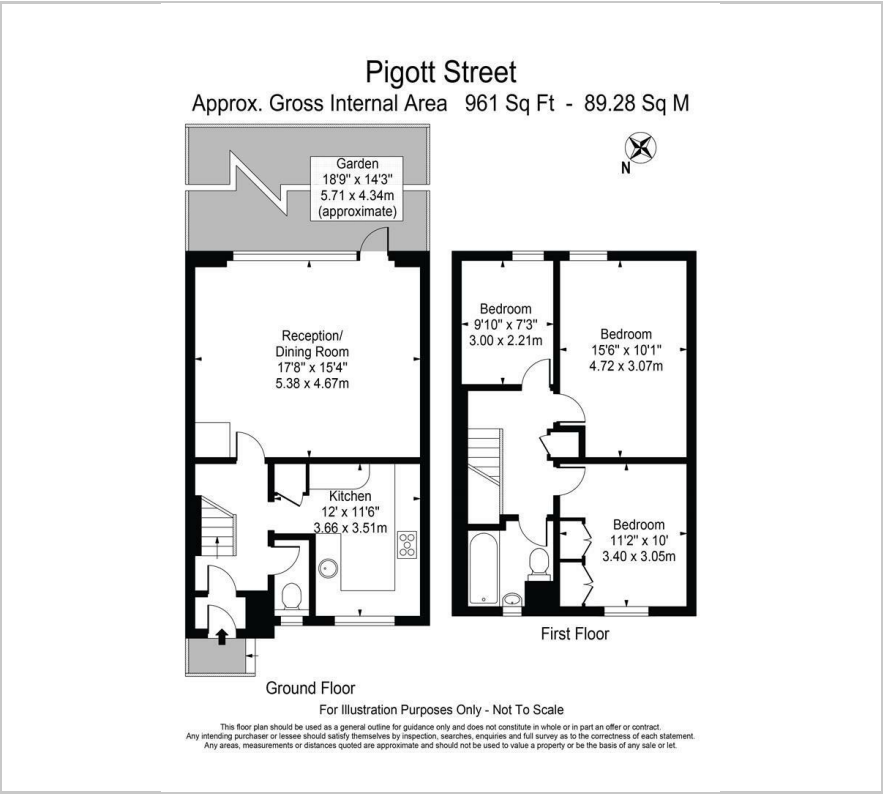
### Viewing

Please contact our Limehouse Sales Office on 02077911777 if you wish to arrange a viewing appointment for this property or require further information.

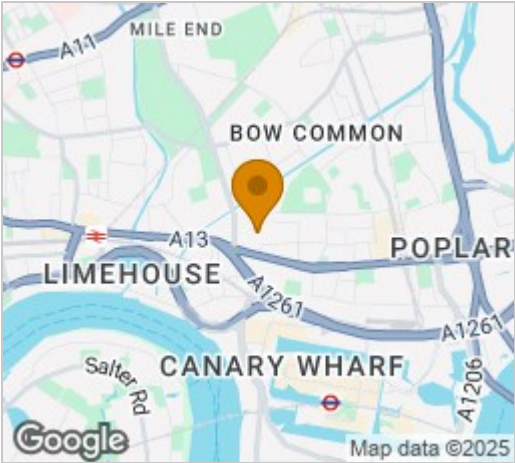




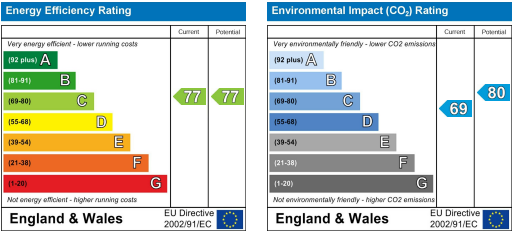
Floor Plan



Area Map



Energy Efficiency Graph



These particulars, whilst believed to be accurate are set out as a general outline only for guidance and do not constitute any part of an offer or contract. Intending purchasers should not rely on them as statements of representation of fact, but must satisfy themselves by inspection or otherwise as to their accuracy. No person in this firms employment has the authority to make or give any representation or warranty in respect of the property.